

State of Wyoming Corner Record

CORNER PERPETUATION AND FILING ACT,
Regulations of the Board of Registration for Professional Engineers and Land Surveyors.)

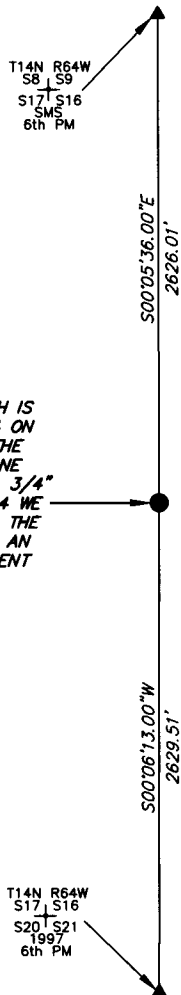
Reverse side of this form may be used if more space is needed.

Record of original survey and citation of source of historic information (if corner is lost or obliterated). Description of corner monumentation evidence found and/or monument and accessories established to perpetuate the location of this corner. Sketch of relative location of monument, accessories, and reference points with course and distance to adjacent corner(s) (if determined in this survey). Method and rationale for reestablishment of lost or obliterated corner.

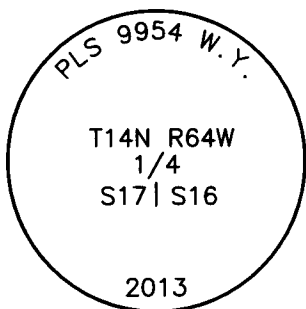
NOTE:
LINES SHOWN ARE BETWEEN
MONUMENTS AND MAY OR
MAY NOT BE SECTION OR
SECTION SUBDIVISION LINES.

FOUND THE ORIGINAL STONE WHICH IS
BROKEN BUT SCRIBED WITH A 1/4 ON
THE EAST FACE. WE ACCEPTED THE
POSITION AND REPLACED THE STONE
WITH A 2.5" ALUMINUM CAP ON A 3/4"
BY 30" REBAR MARKED PLS# 9954 WE
BURIED THE STONE REMNANTS ON THE
WEST SIDE OF THE MONUMENT AS AN
ACCESSORY. THIS IS THE MONUMENT
FOR THIS CORNER COMMON TO 2
SECTIONS.

THE MONUMENT
IS FOR:
T14N R64W
1/4
S17 | S16
2013
6th PM



SCALE 1"=1000'
(EXCEPT IN
TRIVIAL CASES)
BEARINGS ARE RELATED
TO WGS 84 WITH
GPS OBSERVATIONS
DRAWN BY: SM
P.C. D. SHANKS
COUNTY: LARAMIE



CORNER MONUMENT SYMBOLS

- RECORD IS FOR THIS CORNER MONUMENT.
- ▲ A RELATED CORNER OR WC MONUMENT.

THE MONUMENT IS MARKED

Date of Field Work: 11/04/2013 Office Reference: _____

RECP #: 658213
RECORDED 4/6/2015 AT 2:31 PM BK# 2437 PG# 932
Debra K. Lathrop, CLERK OF LARAMIE COUNTY, WY PAGE 1 OF 1

CROSS INDEX DIAGRAM

A	1	2	3	4	5	6	7	8	9	10	11	12	13	14	15	16	17	18	19	20	21	22	23	24	25
B																									
C			6			5					4					3						2			
D																									
E																									
F																									
G			7			8					9					10						11			
H																									
J																									
K																									
L			18			17					16					15						14			
M																									
N																									
O																									
P			19			20					21					22						23			
Q																									
R																									
S																									
T			30			29					28					27						26			
U																									
V																									
W																									
X			31			32					33					34						35			
Y																									
Z	1	2	3	4	5	6	7	8	9	10	11	12	13	14	15	16	17	18	19	20	21	22	23	24	25

Firm/Agency, Address

UELS, LLC

85 South 200 East

Vernal, Utah 84078

Telephone Number: 435-789-1017

This corner record was prepared
by me or under my direction
and supervision.

SEAL & SIGNATURE

